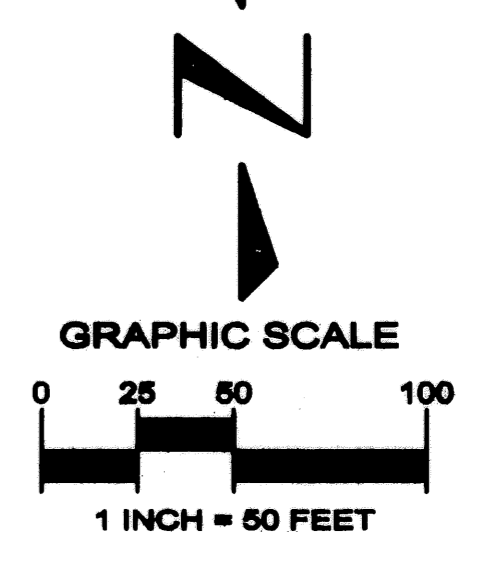
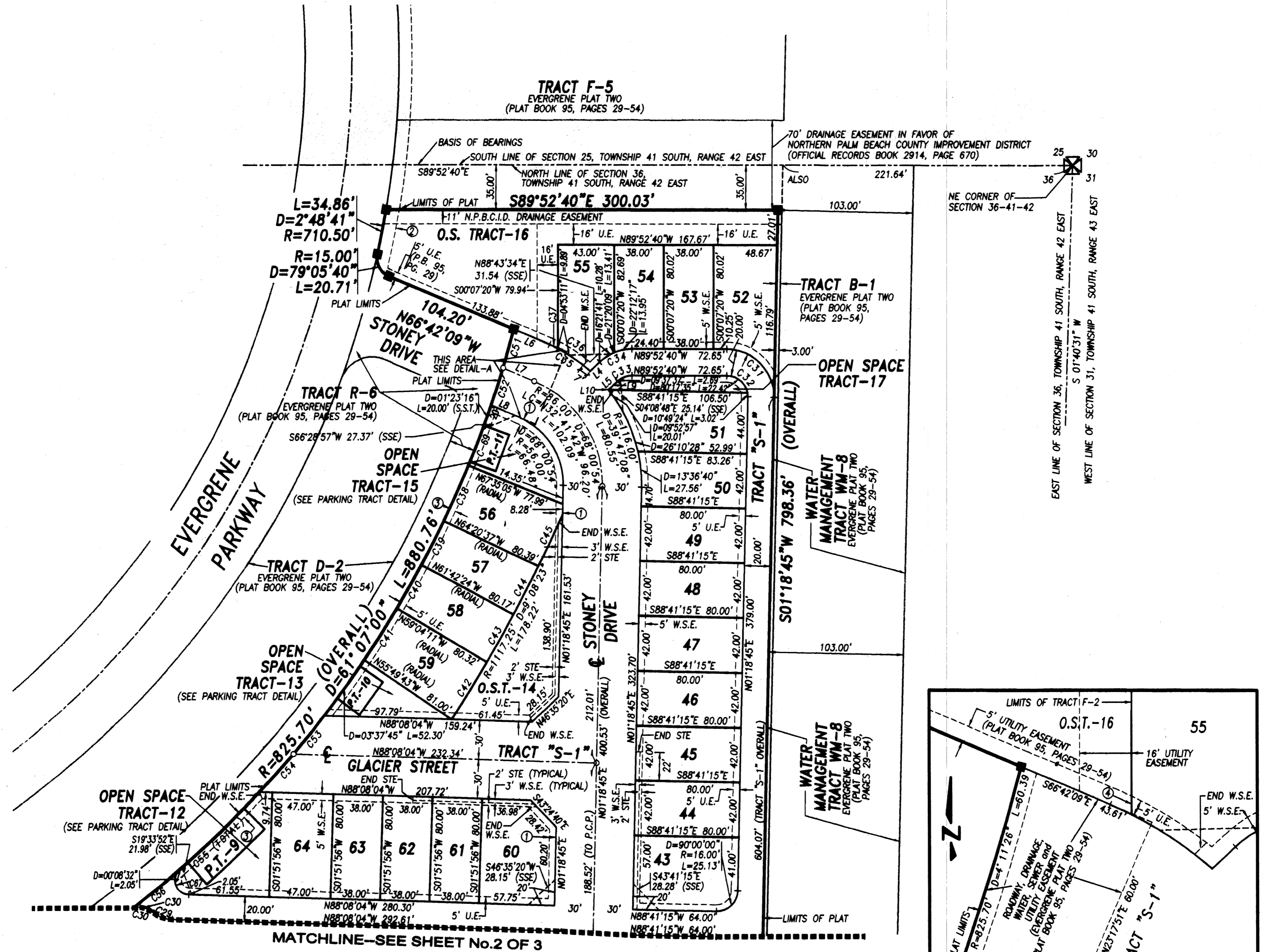


EVERGRENE P.C.D. PLAT SEVEN

A REPLAT OF TRACTS F-2 AND S-14, EVERGRENE PLAT TWO AS RECORDED IN
 PLAT BOOK 95, PAGES 29 THROUGH 54 OF THE PUBLIC RECORDS OF PALM BEACH COUNTY, FLORIDA
 LYING IN THE NORTHEAST QUARTER OF SECTION 36, TOWNSHIP 41 SOUTH, RANGE 42 EAST,
 CITY OF PALM BEACH GARDENS, PALM BEACH COUNTY, FLORIDA
 SHEET No.3 OF 3 OCTOBER 2003



AREA TABULATION		
TRACT NAME	AREA	
	SQUARE FEET	ACRES
OPEN SPACE TRACT-1	319	0.0073
OPEN SPACE TRACT-1A	1675	0.0385
OPEN SPACE TRACT-1B	218	0.0050
OPEN SPACE TRACT-1C	1122	0.0258
OPEN SPACE TRACT-2	12,439	0.2856
OPEN SPACE TRACT-3	13,233	0.3038
OPEN SPACE TRACT-4	595	0.0137
OPEN SPACE TRACT-5	4,288	0.0984
OPEN SPACE TRACT-6	2,785	0.0639
OPEN SPACE TRACT-7	4,413	0.1013
OPEN SPACE TRACT-8	5,339	0.1226
OPEN SPACE TRACT-9	1,438	0.0330
OPEN SPACE TRACT-10	549	0.0126
OPEN SPACE TRACT-11	7,112	0.1633
OPEN SPACE TRACT-12	2,339	0.0537
OPEN SPACE TRACT-13	1,459	0.0335
OPEN SPACE TRACT-14	5,857	0.1345
OPEN SPACE TRACT-15	2,511	0.0576
OPEN SPACE TRACT-16	15,071	0.3460
OPEN SPACE TRACT-17	1,177	0.0270
OPEN SPACE TRACT-18	2,125	0.0489
PARKING TRACT 1	1,355	0.0311
PARKING TRACT 2	1,584	0.0364
PARKING TRACT 3	1,356	0.0311
PARKING TRACT 4	1,503	0.0345
PARKING TRACT 5	680	0.0156
PARKING TRACT 6	1,136	0.0261
PARKING TRACT 7	1,585	0.0364
PARKING TRACT 8	1,730	0.0395
PARKING TRACT 9	1,347	0.0309
PARKING TRACT 10	843	0.0194
PARKING TRACT 11	623	0.0143
ROAD TRACT S-1	184,156	4.2276
LOT-1	3,999	0.0918
LOT-2	4,000	0.0918
LOT-3	4,036	0.0926
LOT-4	3,999	0.0918
LOT-5	4,000	0.0918
LOT-6	4,036	0.0926
LOT-7	5,111	0.1173
LOT-8	3,360	0.0771
LOT-9	3,360	0.0771
LOT-10	3,360	0.0771
LOT-11	3,360	0.0771
LOT-12	3,360	0.0771
LOT-13	4,965	0.1140
LOT-14	4,596	0.1055
LOT-15	3,360	0.0771
LOT-16	3,360	0.0771
LOT-17	3,921	0.0900
LOT-18	4,360	0.1001
LOT-19	3,040	0.0698
LOT-20	3,040	0.0698
LOT-21	3,040	0.0698
LOT-22	3,360	0.0771
LOT-23	4,596	0.1055
LOT-24	3,360	0.0771
LOT-25	3,360	0.0771
LOT-26	3,954	0.0908
LOT-27	3,040	0.0698
LOT-28	3,040	0.0698
LOT-29	3,301	0.1217
LOT-30	3,358	0.0771
LOT-31	3,360	0.0771
LOT-32	3,360	0.0771
LOT-33	3,360	0.0771
LOT-34	3,360	0.0771
LOT-35	3,360	0.0771
LOT-36	3,360	0.0771
LOT-37	3,360	0.0771
LOT-38	3,360	0.0771
LOT-39	3,360	0.0771
LOT-40	3,040	0.0698
LOT-41	3,040	0.0698
LOT-42	3,305	0.0759
LOT-43	4,505	0.1034
LOT-44	3,360	0.0771
LOT-45	3,360	0.0771
LOT-46	3,360	0.0771
LOT-47	3,360	0.0771
LOT-48	3,360	0.0771
LOT-49	3,360	0.0771
LOT-50	3,389	0.0778
LOT-51	4,362	0.1001
LOT-52	4,120	0.0946
LOT-53	3,041	0.0698
LOT-54	3,053	0.0701
LOT-55	3,782	0.0868
LOT-56	3,942	0.0905
LOT-57	3,198	0.0734
LOT-58	3,197	0.0734
LOT-59	3,949	0.0907
LOT-60	4,368	0.1008
LOT-61	3,040	0.0698
LOT-62	3,040	0.0698
LOT-63	3,040	0.0698
LOT-64	3,760	0.0863
LOT-65	4,094	0.0940
LOT-66	3,360	0.0771
LOT-67	3,360	0.0771
LOT-68	3,360	0.0771
LOT-69	3,360	0.0771
LOT-70	3,360	0.0771
LOT-71	3,370	0.0774
TOTALS:	538,668.52	12.3661



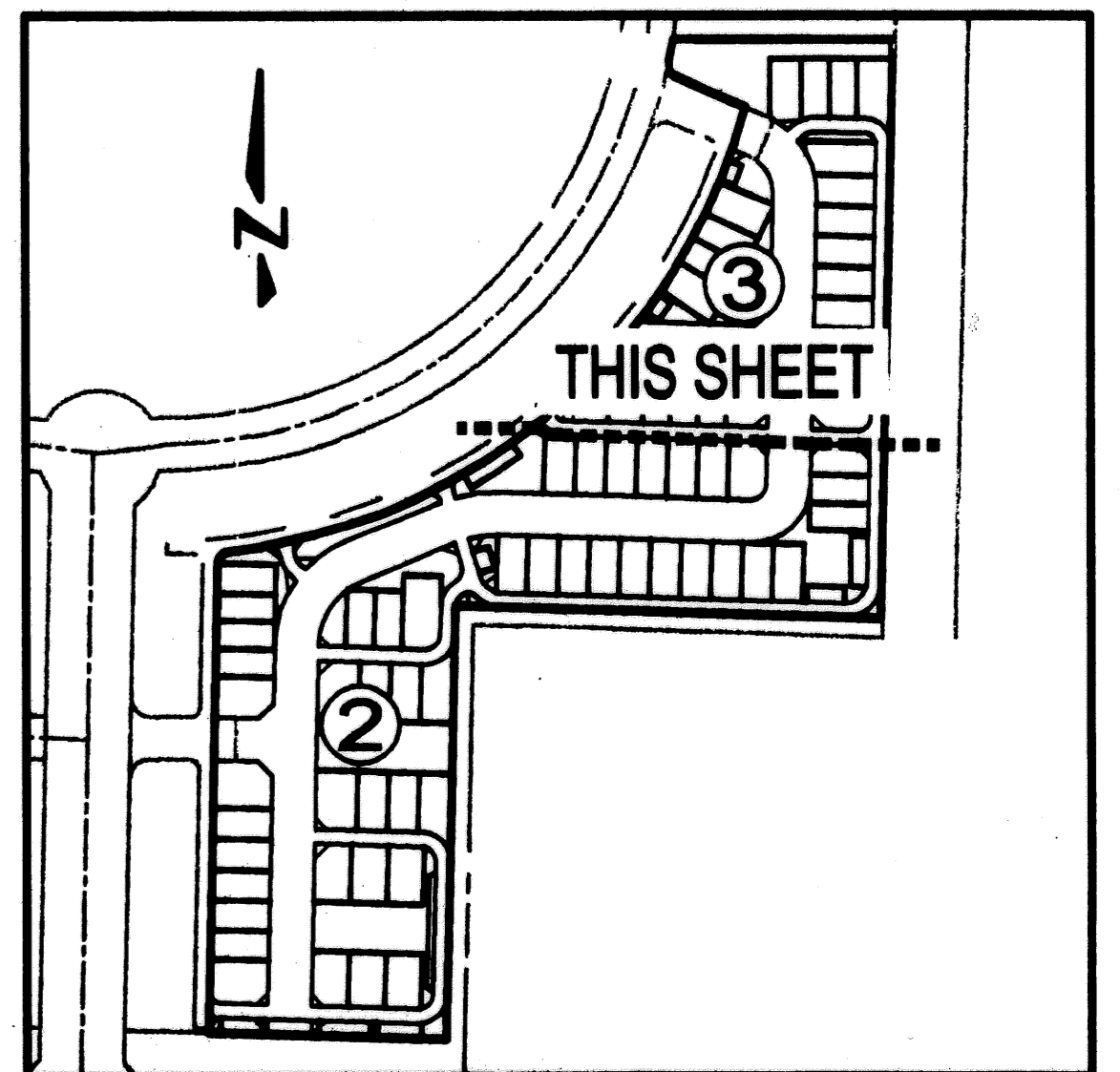
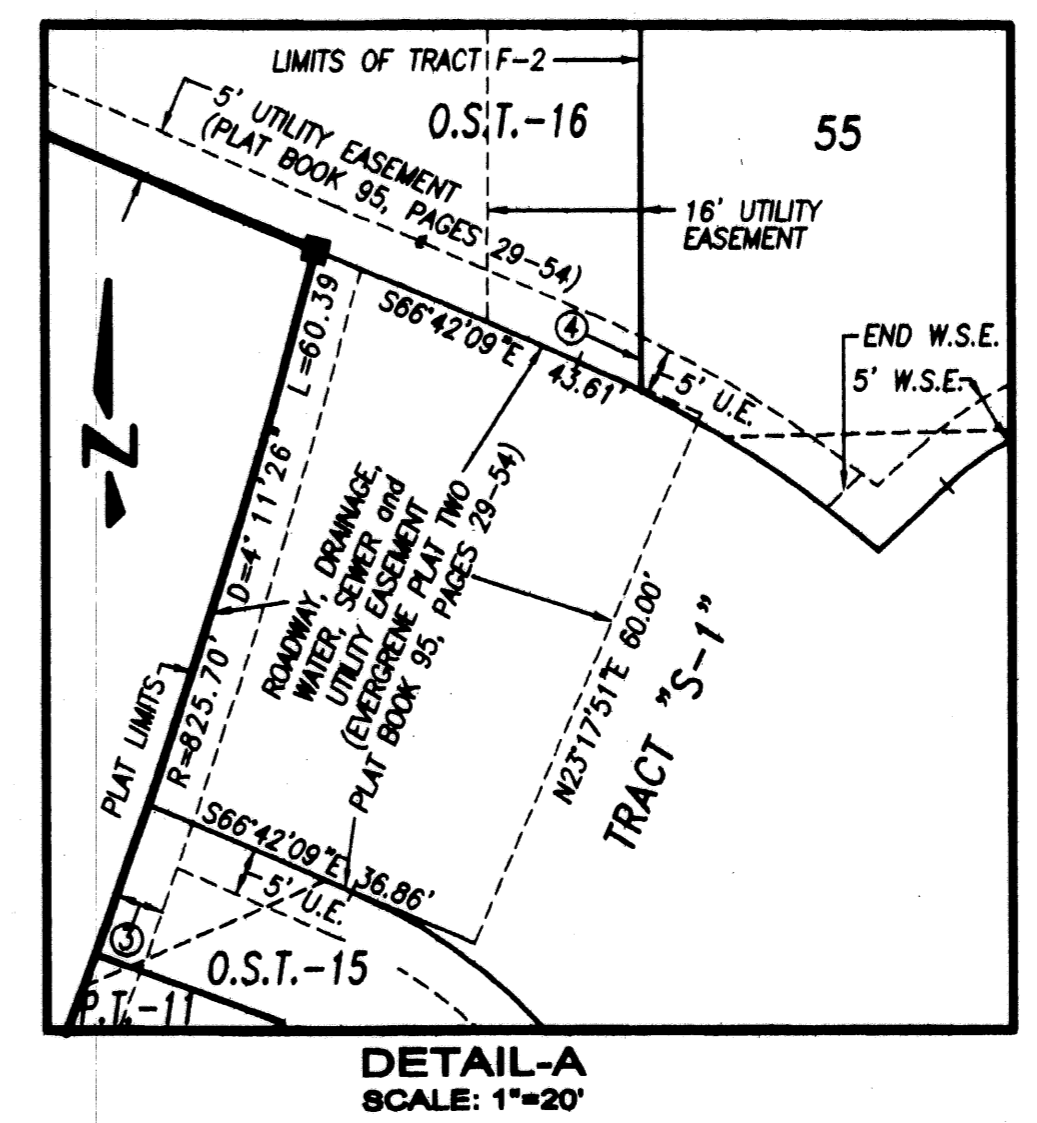
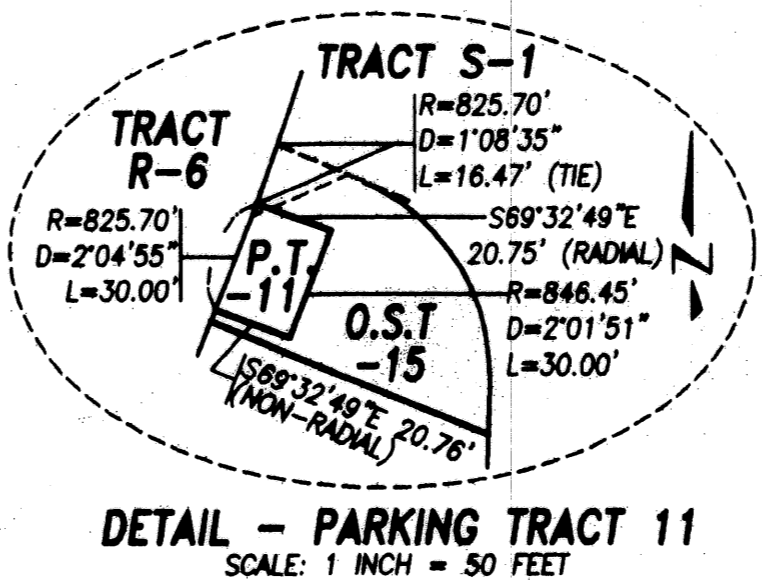
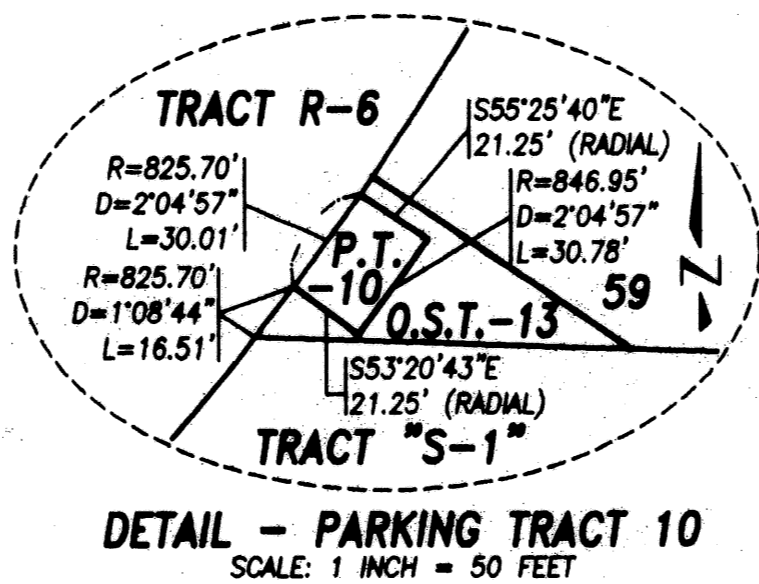
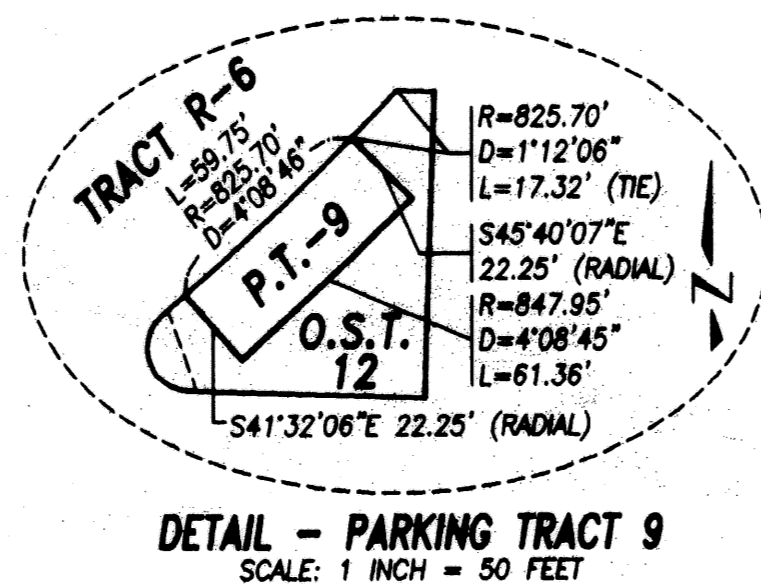
SYMBOLS LEGEND

- PERMANENT REFERENCE MONUMENT (P.R.M) "L.B.4897"
- PERMANENT CONTROL POINT (P.C.P.)
- NPBCID NORTHERN PALM BEACH COUNTY IMPROVEMENT DISTRICT
- R RADIUS
- D DELTA ANGLE
- CA CENTRAL ANGLE
- L ARC LENGTH
- CHORD BEARING AND DISTANCE
- INT INTERSECTION
- C CENTERLINE
- P.O.B. POINT OF BEGINNING
- P.O.C. POINT OF COMMENCING
- CHANGE IN DIRECTION
- P.S.M. PROFESSIONAL SURVEYOR AND MAPPER
- P.C. POINT OF CURVATURE
- U.E. UTILITY EASEMENT
- STE STREET LIGHT EASEMENT
- S.S.E. SAFE SIGHT EASEMENT
- O.S. OPEN SPACE
- O.S.T. OPEN SPACE TRACT
- P.T. PARKING TRACT
- W.A.S.E. WATER AND SEWER EASEMENT
- NR NON-RADIAL LOT LINE
- CHANGE OF DIRECTION PER EVERGRENE P.C.D. PLAT TWO
- 5' UTILITY EASEMENT
- 10' UTILITY EASEMENT (EVERGRENE PLAT TWO-PLAT BOOK 95, PAGES 29-54)
- 5' UTILITY EASEMENT (EVERGRENE PLAT TWO-PLAT BOOK 95, PAGES 29-54)
- LIMITS OF 5' UTILITY EASEMENT (EVERGRENE PLAT TWO-PLAT BOOK 95, PAGES 29-54)

*NOTE: ALL SIDE LOT LINES ARE NON-RADIAL UNLESS OTHERWISE SPECIFIED.

LINE TABLE

LINE	LENGTH	BEARING
L1	0.61'	S01°13'51"W
L2	9.30'	N56°43'58"W
L3	9.30'	N56°43'58"W
L4	9.81'	S46°34'54"W
L5	9.71'	S46°34'54"W
L6	29.68'	N66°42'09"W
L7	25.75'	N66°42'09"W
L8	22.93'	N66°42'09"W
L9	9.71'	N46°34'54"E
L10	0.10'	S46°34'54"W
L11	3.80'	N05°48'49"W
L12	9.75'	S17°14'25"E
L13	0.27'	S17°14'25"E



Keshavarz & Associates, Inc.
 CONSULTING ENGINEERS - SURVEYORS
 711 North Dixie Highway, Suite 201
 West Palm Beach, Florida 33401
 Tel: (561) 689-9680 Fax: (561) 689-7476 LB 4897
 THIS INSTRUMENT WAS PREPARED BY MANUEL A. GUTIERREZ, P.E.M.
 PROFESSIONAL SURVEYOR AND MAPPER NO. LS 4102
 IN THE OFFICE OF KESHAVARZ & ASSOCIATES, INC.
\\kaf\FS\SU\756_PLAT7_EVER.dwg 756_PLAT_5HTS283.dwg 10/14/2003 8:17:40 PM EST